

# PERSPECTIVE

JUNE 2023

Published by the Sidney-Shelby County Chamber of Commerce  
101 South Ohio Avenue, Floor 2, Sidney



## MEETINGS & EVENTS

- 1 Sidney Electric 70 Year Celebration**  
2:00—5:00 p.m.—840 South Vandemark Road
- 1-4 Jackson Center Community Days**  
[www.jacksoncenter.com/eventsforms/community-events/community-days](http://www.jacksoncenter.com/eventsforms/community-events/community-days)
- 2 The Amazing Downtown Race**  
5:30—8:00 p.m.—Downtown Sidney  
[www.sidneylive.regfox.com/amazing-downtown-race-team-registration](http://www.sidneylive.regfox.com/amazing-downtown-race-team-registration)
- 3 Great Sidney Farmer's Market**  
8:00 a.m.—12:00 p.m. Every Saturday through October  
Shelby County Court Square  
[www.sidneylive.wpcmstaging.com/eventscalendar](http://www.sidneylive.wpcmstaging.com/eventscalendar)
- 5-9 Historic Sidney Theatre Summer Camp: Spongebob Bootcamp—Grades 9-12**  
[www.sidneytheatre.org/events](http://www.sidneytheatre.org/events)
- 6 YPCoffeeMob**  
7:30—8:30 a.m.—Waiting Room Coffee House, 121 East North Street  
[www.sidneyshelbychamber.com/events](http://www.sidneyshelbychamber.com/events)
- 6 Downtown Sidney Business Alliance**  
9:00—10:00 a.m.—Amos Memorial Library, Shoemaker Community Room, 230 East North Street
- 7 Shelby County Safety Council**  
**Topic:** Confined Space—What Do You Need To Have?  
**Speaker:** Nick Seitz, Firefighter Safe  
12:00 noon—Wilson Health, 915 West Michigan Street
- 7 Seniomark Presents: Medicare Planning Workshop**  
5:30 p.m.—2551 West Michigan Street—Zoom Option  
[www.seniomark.com/workshops](http://www.seniomark.com/workshops)
- 8 YPconnect Steering Committee**  
12:00 noon—Chamber Office, 101 South Ohio Avenue
- 8 Seniomark Presents: 401(k) Planning Workshop**  
5:30 p.m.—2551 West Michigan Street—Zoom Option  
[www.seniomark.com/workshops](http://www.seniomark.com/workshops)
- 8 SCARF Fundraiser: Bourbon Tasting & Steak Dinner at The Bridge Restaurant**  
6:00 p.m.—The Bridge, 127 West Poplar Street  
[www.facebook.com/HelpShelbyCountyAnimals](http://www.facebook.com/HelpShelbyCountyAnimals)
- 9 Senior Center's Pulled Pork Fundraiser**  
4:00—7:00 p.m.—Open to the Public—Dine In or Drive Thru
- 9 - Botkins Carousel**  
11 [www.botkinscarousel.com](http://www.botkinscarousel.com)
- 10 SCARF Cans for Canines & Felines**  
9:00—11:00 a.m.—Shelby County Animal Shelter  
[www.facebook.com/HelpShelbyCountyAnimals](http://www.facebook.com/HelpShelbyCountyAnimals)
- 12 - Historic Sidney Theatre Summer Camp:**
- 16 Arf!—Grades 1-3**  
[www.sidneytheatre.org/events](http://www.sidneytheatre.org/events)

## 2023 GOLF CLASSIC—WHAT AN AMAZING DAY!

<b>1st Place—54.5</b> Bill Blakely Bill Blakely Jr. Jim Alter Kyle Boyle	<b>2nd Place—54.8</b> Brett Baumeister Nate Counts Brad Milke Jeff Shrader	<b>3rd Place—55</b> Kevin Wajert Dan Reeves Dan Hanes Matt Rubel	<b>4th Place—55.8</b> Scott Pulfer Kevin Ryan Kevin Cox Mason Platfoot	<b>5th Place—56.1</b> Joe Turner Marcus Borgerding Rog Kuenning Mike Meiring
--	--	--	--	--

### PLATINUM SPONSORS

Farmers & Merchants State Bank  
Germain of Sidney  
Shelby County Veterans Service Comm.  
US Bank  
Wilson Health

### GOLD SPONSORS

Community Insurance Group, Ltd.  
Edison State Community College  
H & R Block/JM Green & Assoc.  
Lochard, Inc.  
McCrate, DeLaet & Company  
Plastipak Packaging, Inc.  
Sidney Body CarStar

### SILVER SPONSORS

Dickman Supply, Inc.  
Honda Anna Engine Plant  
Independent Wealth Planning  
Ivex Protective Packaging  
Level MB Construction  
NK Parts Industries, Inc.  
Sidney Manufacturing Company



### PROXIMITY PRIZE WINNERS

#### South Course

Long Putt or Chip #1—Jake Lochard  
Closest to the Pin #3 = Bruce Hetzler  
Long Drive Women #4—Jeanie Bosslet  
Long Drive Men #6—Phil Gilmore

#### North Course

Long Putt or Chip #1—Chris Niswonger  
Long Drive Women #2—Cindy Helman  
Long Drive Men #6—Kevin Ryan  
Closest to the Pin #7—Jeff Schlater

#### West Course

Long Putt or Chip #2—Jason Wagner  
Long Drive Women #2—Barb Meyer  
Long Drive Men #6—Danny Dean  
Closest to the Pin #7—John Kuna

## 2024 GOLF CLASSIC TUESDAY MAY 21

### BRONZE SPONSORS

Airstream  
Align Right Technologies  
Alvetro Orthodontics  
American Architectural Glass  
Davis Accounting & Tax  
Emerson Wagner Realty  
Everyday Technologies  
Ferguson Construction Company  
Goffena Furniture  
Innovative Office Solutions  
Karoc Marathon  
Keith's Truck & Trailer, Inc.  
Lincoln Electric Automation  
Marketing Essentials  
Minster Bank  
Mutual Federal  
NKTelco, Inc.  
Osgood Bank  
P & R Communications  
Ruese Insurance Agency, Inc.  
Selmco Metal Fabricators  
Shaffer Metal Fab, Inc.  
Slagle Mechanical Contractors  
WiseBridge Wealth Management

### PROXIMITY PRIZE DONORS

Airstream  
Everyday Technologies, Inc.  
Hemmelgarn Services  
Park National Bank  
Plastipak Packaging, Inc.  
Vanderhorst Financial Planning

### HOLE SPONSORS

Air Handling Equipment, Inc.  
Express Employment Professionals  
Fort Loramie Dental Center  
Hemmelgarn Services  
Organization Solutions, Inc.  
Primary EyeCare Solutions  
Reliable Business Solutions  
Tomorrow's Technology Today  
Tri-County Board of Recovery  
Universal I Credit Union

### LUNCH SPONSOR

MidWest Industrial Equipment

### HOLE-IN-ONE SPONSOR

Buckeye Ford/Germain of Sidney

### PUTTING CONTEST SPONSOR

Community Insurance Group



Congratulations to Mark Swob with Lincoln Electric Automation and Jeff Schlater with Ferguson Construction Company for splitting the \$250.00 cash in the Community Insurance Putting Contest. Great Job!



## FROM JEFF'S DESK

The Chamber recently conducted a member survey to gauge the level of satisfaction you have with our performance. The survey response rate was on the low side for surveys of this type (average 5-30% | ours 8%), but we value the information shared and sincerely thank those who took the time to weigh-in.



More investigation and deliberation is required on our part, but an early takeaway is that there still seems to be a measured lack of familiarity with the range of benefits offered member organizations through their association with the Chamber. We like to categorize these services into three buckets. Those to increase member visibility in the market, those to decrease member costs of doing business, and those to help employees of member organizations make better decisions on behalf of their company.

If you haven't recently, we encourage you to spend 10 minutes reviewing our member benefit menu on the Chamber web site, [www.sidneyshelbychamber.com](http://www.sidneyshelbychamber.com). In the top toolbar, click Chamber Information and then Member Benefits in the dropdown index. Once there you'll find a comprehensive overview of all offerings and links to other important details such as how to get more information and how to enroll. As always, we welcome your phone calls, emails, and opportunities to sit down to discuss anything and everything on your mind.

Our goal at the Sidney-Shelby County Chamber is to continually pursue opportunities that further your success as an organization. If you have ideas or suggestions on how we can more effectively accomplish this goal, please call or write.

Thanks again to all who participated in the member survey. Your perceptions are valuable and much appreciated.

## WELCOME NEW MEMBERS

**937 + CO.**

**BUSINESS CATEGORY:** Retail/Specialty Store

Logan Billing  
311 West Main Street  
Anna, Ohio 45306  
Phone: (937) 726-8361  
Web Site: [www.937andco.com](http://www.937andco.com)



**MORGAN'S PLACE CEMETERY, INC.**

**BUSINESS CATEGORY:** Social Service/Not for Profit

Mollie Verdier  
1254 State Route 589  
Sidney, Ohio 45365  
Phone: (937) 726-9988  
Web Site: [www.morgansplacecemetery.org](http://www.morgansplacecemetery.org)



## 5 WAYS TO BOOST PRODUCTIVITY AND SLAY YOUR DAY

Are you a master procrastinator? Studies show that 20% of us are chronic procrastinators. Okay, maybe you're not that bad, but we all have that one thing that we know we should do, but... not today. Maybe it's cleaning the garage or organizing the closet. Maybe you really want to write a book or you have a vision for a blockbuster screenplay, but you just can't seem to get it done.

We all procrastinate sometimes. Recent studies indicate that procrastination isn't just bad for our goals; it also impacts our health. Putting off important tasks makes us feel guilty and that guilt increases stress. That stress contributes to a host of health issues such as poor sleep habits, higher anxiety and depression, and lower immunity. Research maintains that chronic procrastinators are even more prone to cardiovascular disease and hypertension. Practice these tips:

1. **Plan with intention:** Create a realistic schedule for the tasks you need to complete. Break down larger tasks into smaller, manageable chunks. Allocate specific time slots for each task as well as breaks. Knowing that you have a break coming up in 10 minutes is often enough to keep you focused for 10 more minutes.

2. **Practice time blocking:** Allocate specific time blocks for different activities or types of tasks. For example, set aside dedicated blocks of time to answer emails, return phone calls or creative work. This helps you maintain focus and prevents tasks from blending together.

3. **Avoid multitasking:** Contrary to popular belief, the brain doesn't actually multitask but rather it switches back and forth between tasks. The more task switching you do, the less focused you are on any one task. Instead, focus on one task at a time, complete it, and then move on to the next. This approach allows for better concentration and reduces the likelihood of errors or overlooking important details.

4. **Take regular breaks:** Taking short breaks throughout the day can help refresh your mind and maintain productivity. Engage in activities like stretching, going for a short walk, or practicing deep breathing exercises. It's important to avoid burnout and sustain your energy levels.

5. **Adopt productivity techniques:** Explore different productivity techniques like the Pomodoro Technique, which involves working for focused 25-minute intervals followed by a short break. Other techniques include the Eisenhower Matrix for prioritization or the Getting Things Done (GTD) method for task management.



## CHECK OUT WHAT'S NEW IN THE WORLD OF YPCONNECT!

*Upcoming events...*

**YPCONNECT COFFEE MOB**  
**TUESDAY, JUNE 6TH - 7:30A-8:30A**  
**THE WAITING ROOM COFFEE HOUSE**  
**NETWORKING! COFFEE! PASTRIES!**

**CORNHOLE TOURNAMENT**  
**SATURDAY, JUNE 17TH - 3P-6P**  
**COURTHOUSE LAWN - SIDNEY**  
**GET YOUR TEAM TOGETHER TODAY!**

FOLLOW US FOR MORE INFO &  
THE LATEST UPDATES:



**SPONSOR SPOTLIGHT**

INTERESTED IN GETTING YOUR BUSINESS IN THE SPOTLIGHT? BECOME A YPCONNECT SPONSOR! / CONTACT: [AWATKINS@MONEYCONCEPTS.COM](mailto:AWATKINS@MONEYCONCEPTS.COM) FOR MORE INFO!

*moments from our past event*



*"Professional is not a label you give yourself - it's a description you hope others will apply to you" - David Maister*

# NATIONAL FLAG DAY IS JUNE 14TH

## MEETINGS & EVENTS CONTINUED

- 12 - Historic Sidney Theatre Summer Camp:**  
**16 Finding Nemo Jr. Bootcamp—Grades 4-6**  
[www.sidneytheatre.org/events](http://www.sidneytheatre.org/events)
- 14 NATIONAL FLAG DAY** 
- 15 Chamber Leadership—FINAL SESSION**  
Topic: Agriculture  
8:00 a.m.—Shelby County Ag Center, 820 Fair Road
- 15 24th Annual Graceland Cemetery Tour**  
[www.shelbycountyhistory.org/exhibits.htm](http://www.shelbycountyhistory.org/exhibits.htm)
- 16 - Anna Homecoming**  
[www.facebook.com/AnnaHomecomingFestival](http://www.facebook.com/AnnaHomecomingFestival)
- 17 YPconnect Cornhole Tournament**  
3:00—6:00 p.m.—Court Square Lawn  
[www.sidneyshelbychamber.com/events](http://www.sidneyshelbychamber.com/events)
- 17 Cruise Sidney**  
[www.shelbycountyhistory.org/exhibits.htm](http://www.shelbycountyhistory.org/exhibits.htm)
- 17 - Smallmouth Bass Fishing Challenge**  
**8/18** [www.visitsidneyshelby.com/calendar](http://www.visitsidneyshelby.com/calendar)
- 19 - Historic Sidney Theatre Summer Camp:**  
**23 Zombies!—Grades 6-8**  
[www.sidneytheatre.org/events](http://www.sidneytheatre.org/events)
- 22 Human Resources Council**  
Topic: TBD  
12:00 noon—Holiday Inn Express & Suites, 450 Folkerth Avenue
- 23 Senior Center Presents: Grandparents Night**  
6:00 p.m.—7:00 p.m.—304 South West Avenue  
FREE and Open to the Public
- 23 - Holy Angels Parish Picnic**  
**24** [www.holyangelsparishpicnic.org](http://www.holyangelsparishpicnic.org)
- 24 Tawawa Park 75th Anniversary Festival & Cruise In**  
10:00 a.m.—4:00 p.m.—Tawawa Civic Park  
[www.visitsidneyshelby.com/calendar](http://www.visitsidneyshelby.com/calendar)
- 28 Senior Center Blood Drive**  
10:00 a.m.—4:00 p.m., 304 South West Avenue
- 30 - Fort Loramie Liberty Days Festival**  
**7/2** [www.facebook.com/liberty.days.3](http://www.facebook.com/liberty.days.3)



## DISCOVER MAGAZINES HAVE ARRIVED!

6,000 copies of the 2023 *Discover Shelby County* magazine have arrived at the Chamber office and we are thrilled to be able to share this 17th edition with you. A copy has been mailed to each member and we are currently in

the process of delivering them far and wide to the hotels, libraries, schools, HR departments, the hospital, banks, village offices and hot spots—you name it and we are taking it there!

If your organization would like a supply for recruiting or to place in your lobby, just let us know and we will be happy to bring them to you.

Thank you for your continued support of this annual publication!

## AI IN HIRING AND EVALUATING WORKERS: WHAT AMERICANS THINK

Article reprinted with permission by Express Employment Professionals

62% believe artificial intelligence will have a major impact on jobholders overall in the next 20 years, but far fewer think it will greatly affect them personally. People are generally wary and uncertain of AI being used in hiring and assessing workers

The rapid rise of ChatGPT and other artificial intelligence (AI) systems has prompted widespread debates about the effectiveness of these computer programs and how people would react to them. At times, Americans are watching the general spread of AI with a range of concerns, especially when the use of AI systems raises the prospect of discrimination and bias.

One major arena where AI systems have been widely implemented is workplace operations. Some officials estimate that many employers use AI in some form of their hiring and workplace decision-making.

A new Pew Research Center survey finds crosscurrents in the public's opinions as they look at the possible uses of AI in workplaces. Americans are wary and sometimes worried. For instance, they oppose AI use in making final hiring decisions by a 71%-7% margin, and a majority also opposes AI analysis being used in making firing decisions. Pluralities oppose AI use in reviewing job applications and in determining whether a worker should be promoted. Beyond that, majorities do not support the idea of AI systems being used to track workers' movements while they are at work or keeping track of when office workers are at their desks.

Yet there are instances where people think AI in workplaces would do better than humans. For example, 47% think AI would do better than humans at evaluating all job applicants in the same way, while a much smaller share – 15% – believe AI would be worse than humans in doing that. And among those who believe that bias along racial and ethnic lines is a problem in performance evaluations generally, more believe that greater use of AI by employers would make things better rather than worse in the hiring and worker-evaluation process.

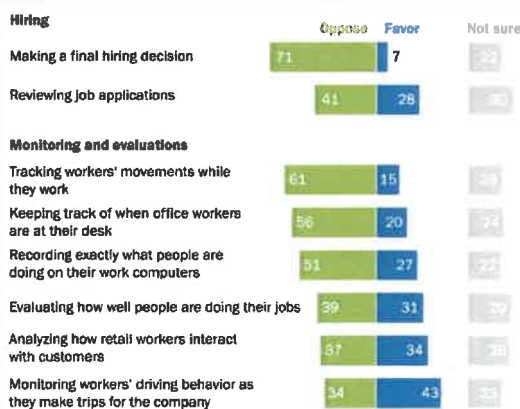
Overall, larger shares of Americans than not believe AI use in workplaces will significantly affect workers in general, but far fewer believe the use of AI in those places will have a major impact on them personally. Some 62% think the use of AI in the workplace will have a major impact on workers generally over the next 20 years. On the other hand, just 28% believe the use of AI will have a major impact on them personally, while roughly half believe there will be no impact on them or that the impact will be minor.

Asked about potentially beneficial or harmful effects of AI in workplaces in the next 20 years, a higher share say it will *hurt* more than help workers than say the inverse. About a third of Americans (32%) think the benefits and harms will be equally split for workers generally, while 22% are not sure about its potential effect.

At the personal level, 38% of Americans say they are not sure what the outcome of AI use in workplaces will be for them personally. Three-in-ten say the use of AI in these places will even out – the help and the hurt will be equal. Some 16% of adults think they themselves will be more helped than hurt, and 15% believe they themselves will be more hurt than helped.

When it comes to Americans' opinions about the impact of AI use in the workplace on the overall U.S. economy, 56% think over the next 20 years the impact will major, while 22% believe it will be minor. A small fraction (3%) say there will be no impact and 19% are not sure.

Americans widely oppose employers using AI to make final hiring decisions and track workers' movements while they work.



Americans have a range of views about the use of artificial intelligence systems by employers. They strongly oppose some possible applications of AI, but they also are more supportive of others.

They reject the idea that AI would be used in making final hiring decisions, by a ratio of roughly ten-to-one. A smaller plurality (41%) also opposes the use of AI in reviewing job applications. These findings line up with a theme in center research: that people are not comfortable ceding final decision-making to a computer program.



# SENIOR Center

OF SIDNEY-SHELBY COUNTY



**Are you 50 or older?** Stop in and claim two **FREE** visits and see all our activities, fitness room and available exercise classes! Our membership is only **\$35/year** for Shelby County residents and **\$40/year** for out of county.

304 S. West Avenue, Sidney, Ohio 45365  
 Phone: (937) 492-5266 • email: srcenter@nktelco.net  
[www.srcentersidney-shelby.com](http://www.srcentersidney-shelby.com)

Let Us Help You  
 With Your Hiring  
 Needs!



Rob & Lisa Albers, Local Owners  
 937-538-4250  
[www.expresspros.com/sidneyoh](http://www.expresspros.com/sidneyoh)

**Services Include:**

- Office Services
- Skilled Trades
- Professional
- Light Industrial
- Temporary or Contract
- Evaluation Hire
- Direct Hire



101 South Ohio Avenue  
 Floor 2  
 Sidney, Ohio 45365  
 (937) 492-9122

PRSRT STD  
 U.S. POSTAGE  
 PAID  
 SIDNEY, OH  
 PERMIT NO. 423

CHECK US OUT ON FACEBOOK, LINKEDIN & TWITTER



310 E. Russell Road | Sidney, OH 45365

P: 937-492-0346 | F: 937-492-4447

[SollmannElectric.com](http://SollmannElectric.com)

*Committed to Electrical Excellence Since 1973*

WE ARE AN EQUAL OPPORTUNITY EMPLOYER  
 OH LIC 26835



WEALTH MANAGEMENT

**(937)518-1776**

All securities through Money Concepts Capital Corp. Member FINRA/SIPC  
 WiseBridge Wealth Management is not affiliated with Money Concepts Capital Corp

**Electricians Needed!**  
 No experience required, we will provide training.

Apply online at  
[SollmannElectric.com/apply-online/](http://SollmannElectric.com/apply-online/)

Apply in person at  
 Sollmann Electric Company  
 310 E. Russell Rd., Sidney, OH 45365



NKT Managed  
 Services

LET US PROVIDE YOUR IT  
 AND SUPPORT

[WWW.NKTELCO.COM](http://WWW.NKTELCO.COM)

1-888-NKTELCO